

Technical Information iSafePro 360 - VERSO Central unit



CONTENTS

CONTENTS	2
Acknowledgement	3
Information and RECOMMENDATIONS	4
Technical characteristics	5
1) VERSO.....	5
2) VERSO-220.....	5
3) PROTECTION.....	5
CONNECTING A DEVICE USING THE wiegand or clock & data protocol	6
CONNECTING V-EXT4 AND V-EXT4-220 modules	7
CONNECTING A POWER LOSS BOLT AND AN ELECTROMAGNETIC DOOR LOCK OPERATING ON POWER LOSS	8
CONNECTING A STANDARD POWER-ON DOOR LOCK	9
CONNECTING THE verso UNIT TO AN Ethernet NETWORK	10
Installation OF VISOR 360 dongle	11
FUNCTIONS OF THE TERMINALS	12
USE OF THE RESET BUTTONS	13

ACKNOWLEDGEMENT

Dear client,

*You have just purchased an “iSafePro 360 **VERSO**” unit.*

We thank you for your interest in our products.

If you want more information about our range, please don't hesitate to contact your dealer.

We wish you every success with your installation.

Immotec systems, Inc.

www.immotec.ca

INFORMATION AND RECOMMENDATIONS



Pursuant to European directive UTE C00-200, incorporating directives 89/336 EEC and 92/31 EEC, VERSO complies with the following standards:

- NF EN 50081-1 governing electromagnetic radiation, and
 - NF EN 50082-1 governing electromagnetic susceptibility.
- o **Cabling recommendations:** the cables used to connect readers, the network and other peripherals must be installed in accordance with the instructions for Level 2 (protected environment) of standard NF EN 61000-4-4.
- o **This product must be installed by an approved company.** Incorrect installation and use may result in electric shock or fire. Before installation, read the technical information and comply with the recommendations for assembling the product.
- o **For the 220V version, once the power is turned off, all the internal capacitors will discharge themselves to a safe level after 60 seconds under normal conditions. However, in the event of a power failure, the charge may be maintained for much longer and suitable precautions should be taken before handling the product.**

TECHNICAL CHARACTERISTICS

1) *iSafePro 360 VERSO*

Maximum power consumption	300 mA
Supply voltage	9 – 14VDC
Weight with housing.....	150 g
Housing dimensions.....	157 x 108 x 30 mm
Operating temperature.....	- 20°C to + 50°C
Control relay.....	1A / 12V – 1A / 24V

2) *iSafePro 360 VERSO-220*

Weight with housing.....	4 kg
Housing dimensions.....	330 x 275 x 80 mm
Operating temperature.....	- 20°C to + 50°C
<i>Integrated 220V power supply:</i>	
Output voltage.....	12V
Maximum output current	F2.5A F1.6A F0.5A F0.5A
Battery connection	12V, 7Ah (size L x D: 151 x 65 mm)
Control relay.....	1A / 12V – 1A / 24V

3) **PROTECTION**

The unit is fitted with a 5x20 1A fuse on the 12V input inside the housing. If the power light does not come on when the unit is switched on, check this fuse.

CONNECTING A DEVICE USING THE WIEGAND OR CLOCK & DATA PROTOCOL



WIEGAND:

- o Proximity readers (HID, INDALA, etc.)
- o Key pads (HID, etc.)
- o Biometric readers
- o Radio receivers

CLOCK & DATA:

- o Magnetic strip readers
- o Barcode readers
- o Proximity readers
- o Radio receivers

Information:

5 conductors (3 pairs recommended)

Max. distance: 150 m

Cable type: 0.6 mm (SYT recommended)

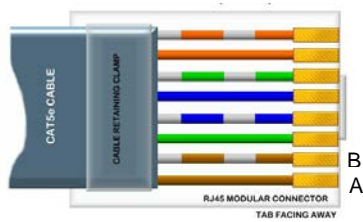
Shield: Optional

Warning: Do not install the unit-reader cables near other high voltage or high current cables, particularly 220V or higher.

Note: Each reader can have different technology (e.g. Reader 1 using Wiegand, Reader 2 using Clock & Data).

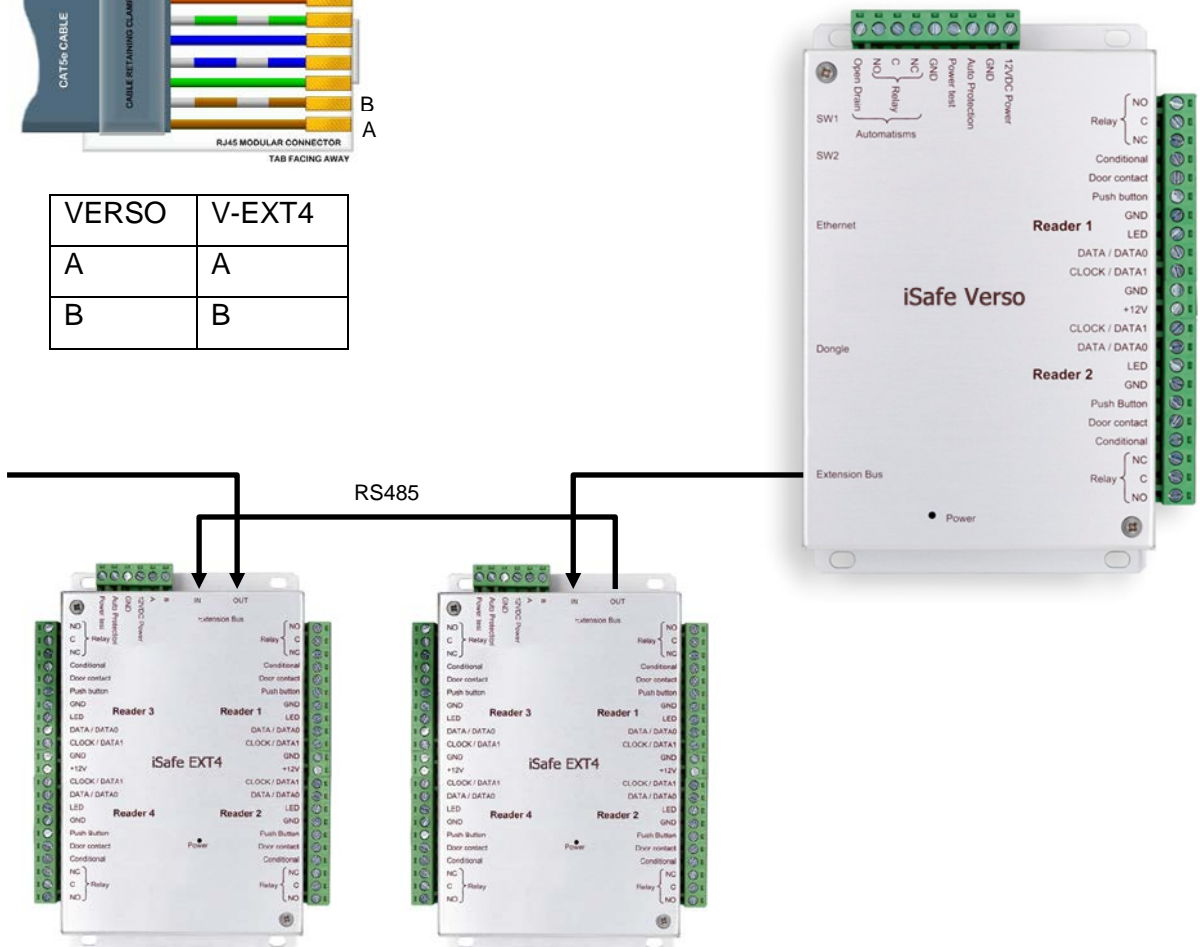
Warning: If you use an external power supply for your proximity readers, take care to **connect the various earths to that of the unit.**

CONNECTING V-EXT4 AND V-EXT4-220 MODULES



VERSO	V-EXT4
A	A
B	B

Up to 10 modules per VERSO



You can also use the A and B terminals on the V-EXT4 modules to connect an RS485 bus.

Information:

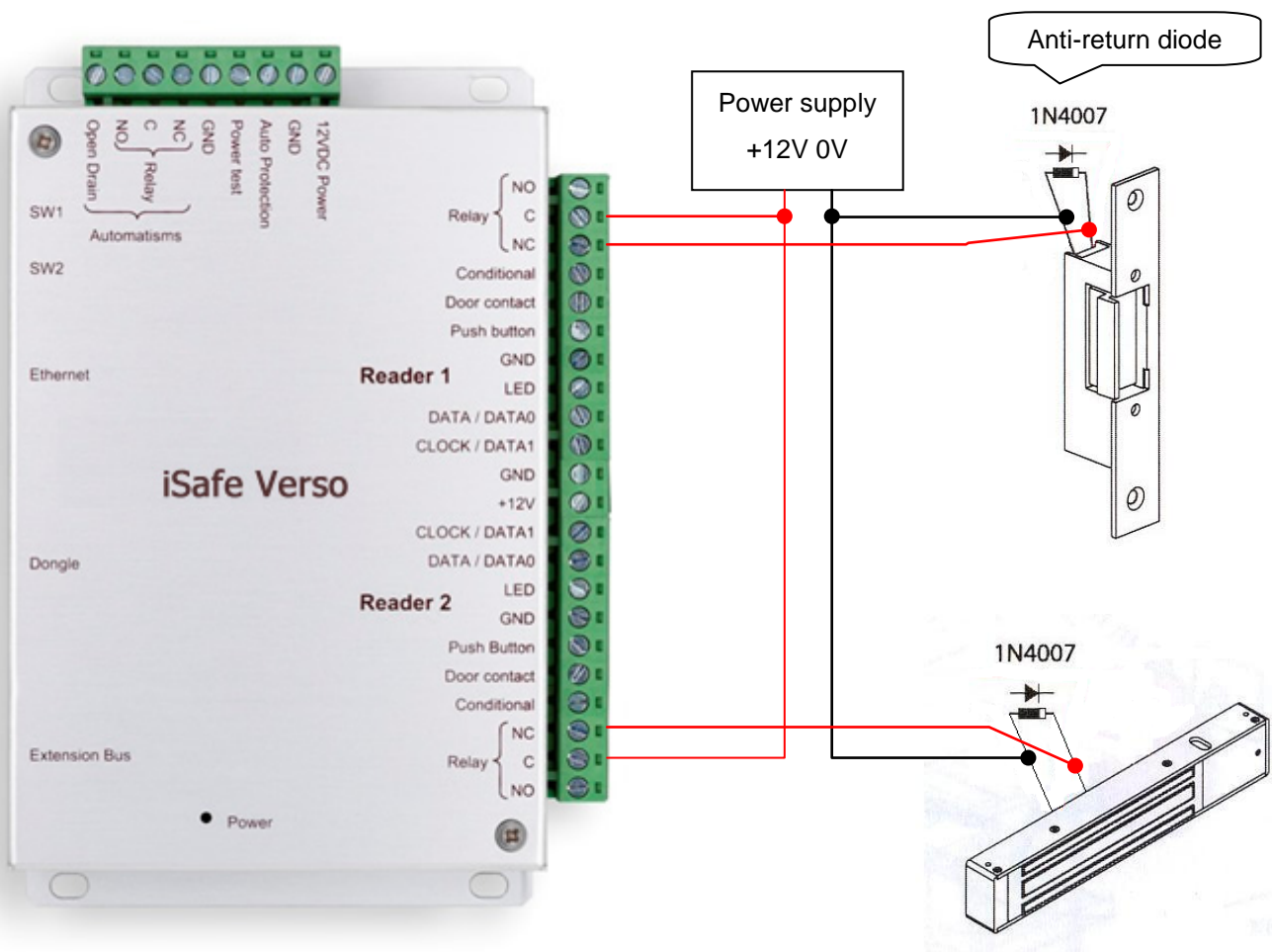
2 conductors (2 pairs recommended)

Max. distance: 750 m

Cable type: 0.6 mm (SYT recommended)

Warning: Do not install the cables near other high voltage or high current cables, particularly 220V or higher. Use the same pair for the A and B lines.

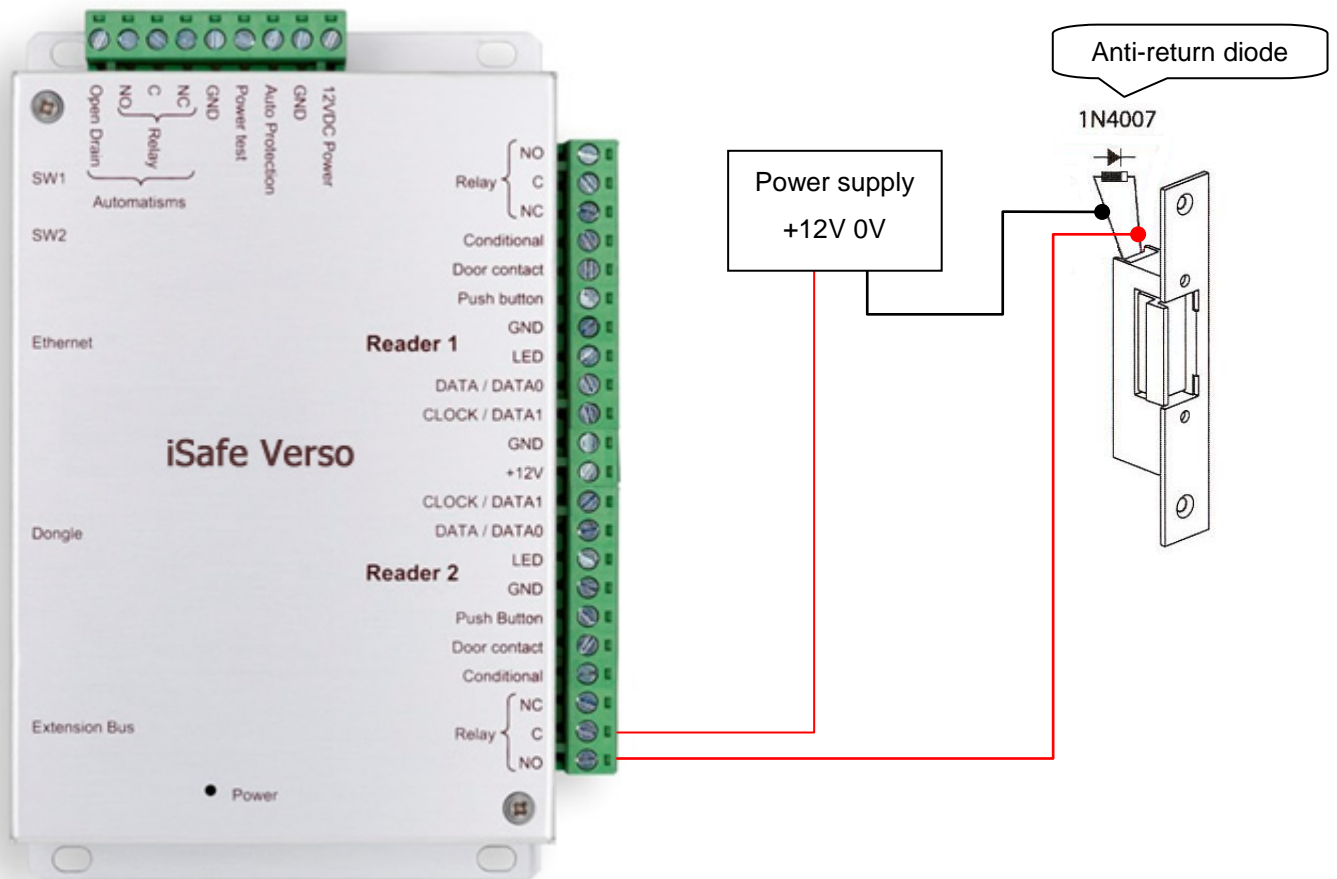
CONNECTING A POWER LOSS BOLT AND AN ELECTROMAGNETIC DOOR LOCK OPERATING ON POWER LOSS



Warning: In order to prevent random malfunctions that may interfere with proper system operation due to back-currents, it is imperative to use and connect the anti-back-current diodes supplied with the unit in compliance with the cabling diagram above.

Even when using an additional uninterruptible power supply for locking separate to that of the unit, it is obligatory to follow the above cabling diagram.

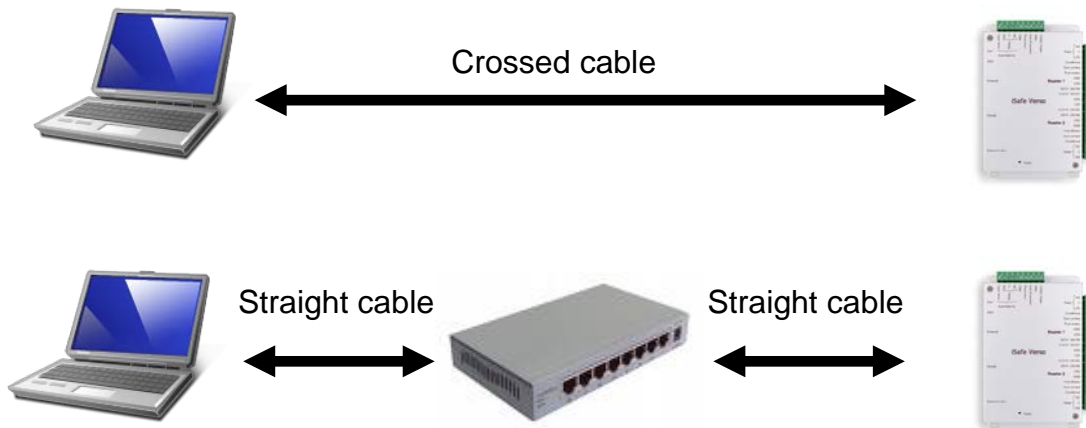
CONNECTING A STANDARD POWER-ON DOOR LOCK



Warning: In order to prevent random malfunctions that may interfere with proper system operation due to back-currents, it is imperative to use and connect the anti-back-current diodes supplied with the unit in compliance with the cabling diagram above.

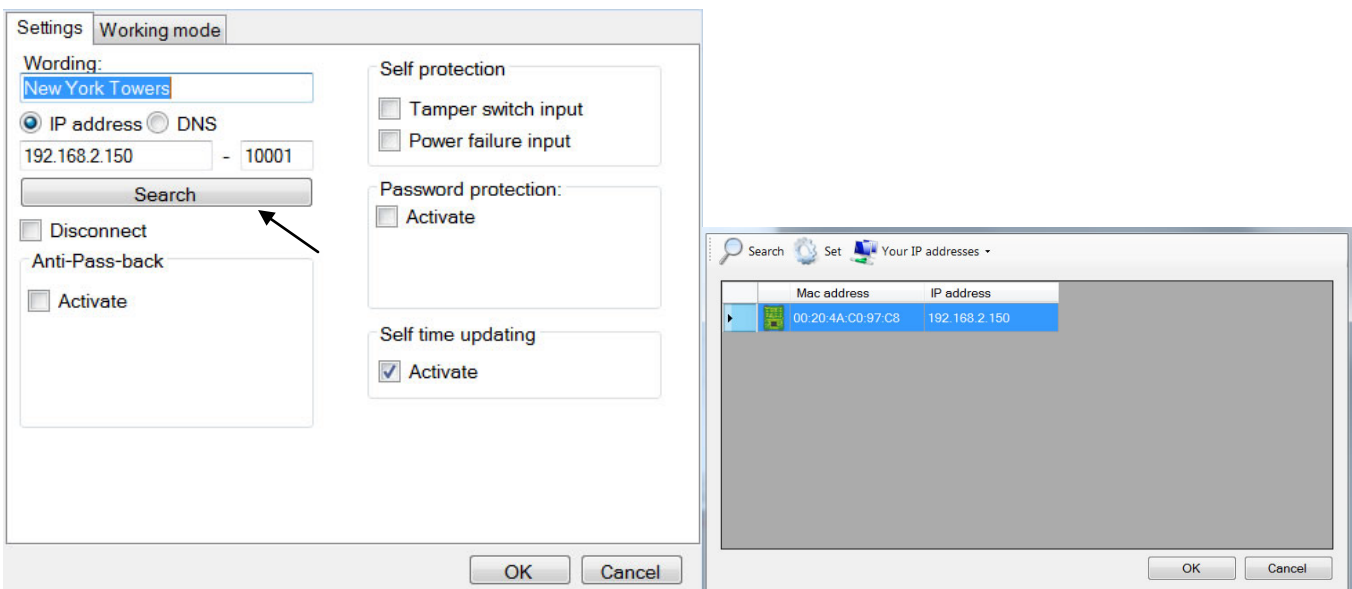
Even when using an additional uninterruptible power supply for locking separate to that of the unit, it is obligatory to follow the above cabling diagram.

CONNECTING THE VERSO UNIT TO AN ETHERNET NETWORK



Each VERSO unit has an IP address. This address is printed on a sticker on the unit housing. To configure a different IP address, you can use the “Automatic detection” menu in VISOR. To do this, proceed as follows:

- After having created your installation, on first start up, VISOR offers to create a new unit
- Click on the “Search” button
- A list of detected units will appear
- Double click on the unit you want to add
- Check the equipment list to confirm that your unit is properly connected.



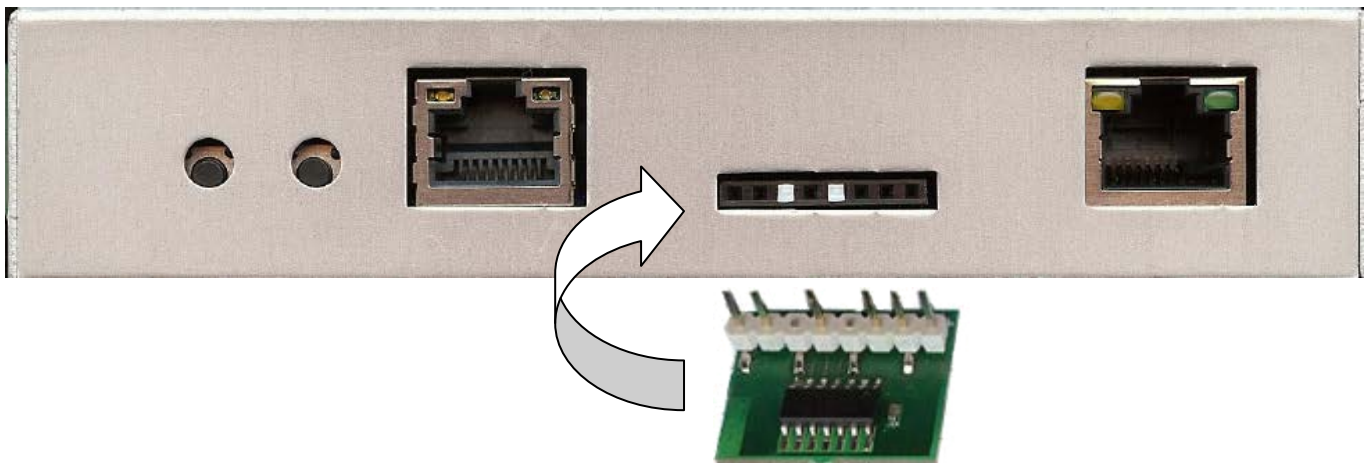
INSTALLATION OF VISOR 360 DONGLE

To use the VISOR software, you must, in certain cases (see following table), install a dongle on your unit.

Use of the dongle

Number of readers in the installation	Software	Dongle
Up to 2 readers	VISOR LIGHT	No dongle required
Up to 10 readers	VISOR-10P	Dongle required
Up to 40 readers	VISOR-40P	Dongle required
Up to 140 readers	VISOR-140P	Dongle required
Up to 840 readers	VISOR-840P	Dongle required

Installation of dongle: **with the power off**, install the dongle as shown below:



To confirm proper operation, VISOR shows the version being used at the bottom of the main screen. Your unit must be rated for the dongle to be detected.

If you do not have the correct dongle for your installation type, your units will be displayed “rated” in the equipment list but no updates or event collection will be performed.

FUNCTIONS OF THE TERMINALS



USE OF THE RESET BUTTONS



Use this switch to restore the factory network settings (IP address: 192.168.2.150, mask 255.255.255.0).

Turn off the power.

Hold the switch down while turning the power back on

Wait until the relays engage (about 20 seconds) holding the switch down

Release the switch

Use this switch to clear the unit memory

Turn off the power.

Hold the switch down while turning the power back on

Wait until the relays engage (about 20 seconds) holding the switch down

Release the switch